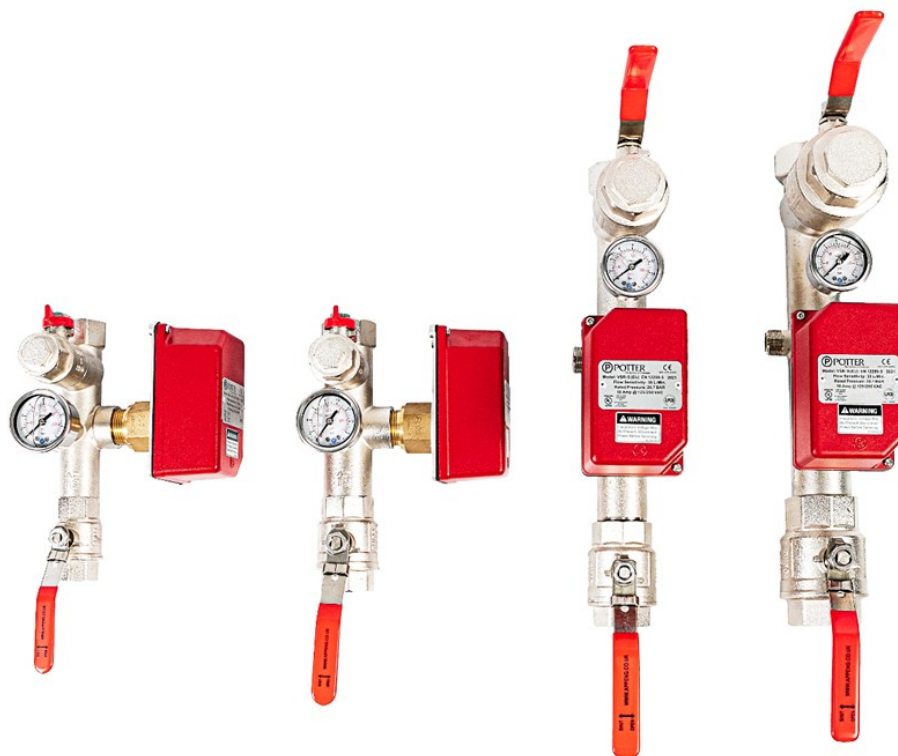




AE VS-A1 — DUAL PORT POTTER FIRE SPRINKLER VALVE SET



BS 9251:2021

Applications Engineering Dual port fire sprinkler valve set has been specifically designed for the residential & Domestic market using a Potter VSR-S series flow switch. A monitored Ball valve can be retro fitted and using our unique design also gives the option to monitor to the flow switch

Features

- Dual ports that enable the flow switch to be mounted on either side.
- Uses Potter VSR-S series flow switch with an inbuilt adjustable time delay
- 100% pressure tested.
- Lockable inlet valve handle
- 1" full bore test valve
- Space saving butterfly handle fitted to drain valve, free of charge
- butterfly handle tool available on request for easy opening
- Glycerine filled 16 bar pressure gauge
- No loss connector fitted to pressure gauge allows replacement without draining the system
- Easy access for servicing
- Space saving - 244mm end to end

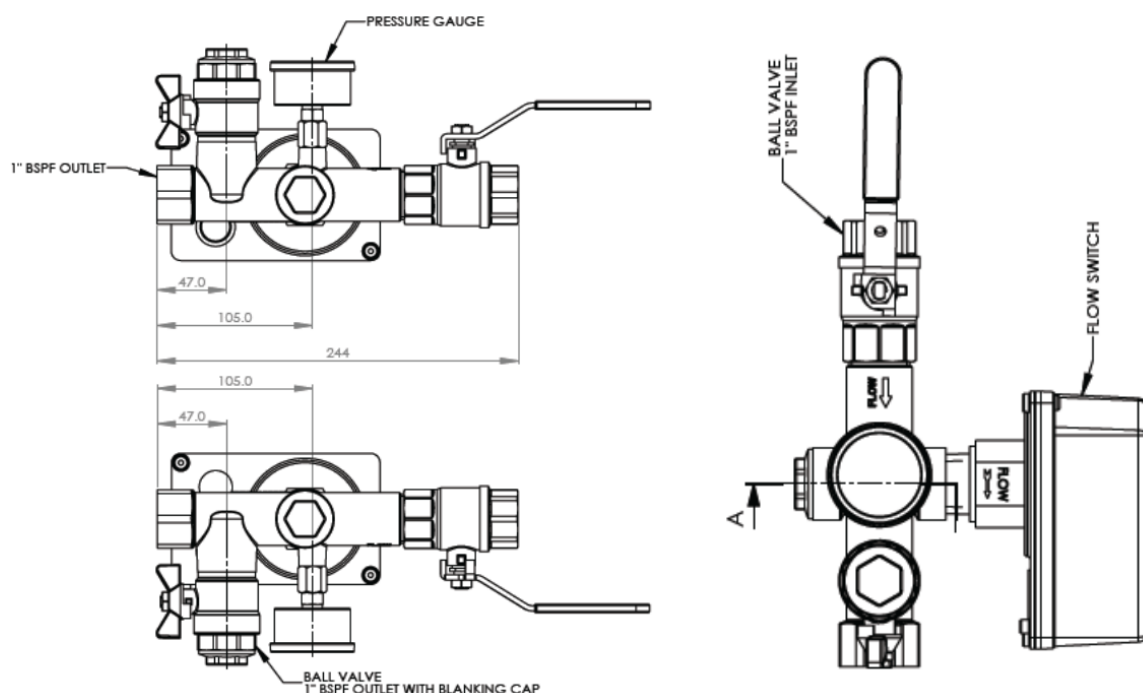


A full range of fittings and adaptors can be fitted and sealed in house by our team to any of our Valves & Valve sets, additional & Bespoke attachments can be fitted on request

Potter switch orientation differs depending on valve set size. On 1" and 1 1/4" valve set, the Potter flow switch can be fitted to either of the dual ports found on each side of the manifold. For the 1 1/2" & 2" valve set, the flow switch is fitted to the 1" port on the top of the manifold.



AE VS-A1 — DUAL PORT POTTER FIRE SPRINKLER VALVE SET



Order Number	Description
AE VS1-A1	DN25 (1") Dual Port Valve set with Potter Flow switch
AE VS2-A1	DN32 (1 1/4") Dual Port Valve set with Potter Flow switch
AE VS1-A1-BB	DN25 (1") Dual Port Valve set with Potter Flow switch & CPVC on inlet and outlet
AE VS2-A1-BB	DN32 (1 1/4") Dual Port Valve set with Potter Flow switch & CPVC on inlet and outlet
AE VS1-A1-C	DN25 (1") Dual Port Valve set with Potter Flow switch fitted & single check valve Inlet
AE VS2-A1-C	DN32 (1 1/4") Dual Port Valve set with Potter Flow switch fitted & single check valve Inlet

*Many more options available, just ask a member of the team for details

Optional Keyed alike padlock compatible with all AEL Valves & Valve Sets.

Ordering code: AE-PAD-1



Technical Data	
Pressure Rating	16 Bar
Temperature Range	4.5° C to 49° C
Flow Range	15-38 LPM
Flow Switch Protection Class	IP54
Switching Current	Max 10 A
Switching voltage	Max 250 VAC
Maximum Surge	5.5 m/s

