

## AE VS-A - ½" & 2" DUAL PORT FIRE SPRINKLER VALVE SET



**BS 9251:2021**



2831-CPR-S0095

### Features

- Monitored full bore isolation valve compliant to BS 9251: 2021
- AEL VKS JB flow switch LPCB approved to EN 12259-5
- Dual ports that enable the flow switch to be mounted on either side
- AEL VKS JB flow switch which has been designed specifically for the valve set to operate at 25 L/min
- The flow switch has a ¾" union nut for simple, hand tight installation no need for tools or awkward 360° rotation of the whole switch
- 1" Top port allows a Potter flow switch to be mounted
- 100% pressure tested.
- Lockable inlet valve handle
- Full bore test valve
- Glycerine filled 16 bar pressure gauge
- Easy access for servicing
- Less joints minimise risk of leaks

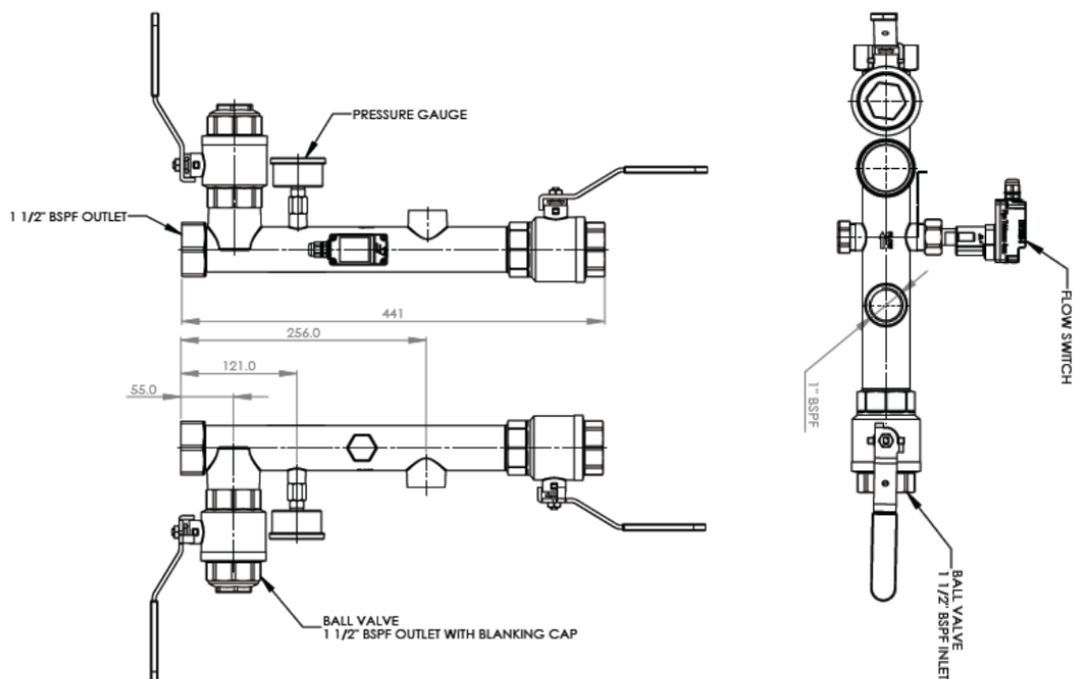
Applications Engineering dual port monitored fire sprinkler valve set has been specifically designed for the residential and Domestic market, using our AE VKS-JB switch that has been specifically designed to activate at 25 l/min. The monitored Ball valve can be retro fitted and using our unique design also gives the option to monitor to the flow switch



A full range of fittings and adaptors can be fitted and sealed in house by our team to any of our Valves & Valve sets, additional & Bespoke attachments can be fitted on request



# AE VS-A - 1/2" & 2" DUAL PORT FIRE SPRINKLER VALVE SET



Order Number	Description
AE VS3-A	DN40 (1 1/2") Dual Port Residential Valve set kit
AE VS4-A	DN50 (2") Dual Port Residential Valve set kit
AE VS3-A-BB	DN40 (1 1/2") Dual Port Residential Valve set kit with CPVC on inlet and outlet
AE VS4-A-BB	DN50 (2") Dual Port Residential Valve set kit with CPVC on inlet and outlet
AE VS3-A-C	DN40 (1 1/2") Dual Port Residential Valve set kit with Single Check Valve
AE VS4-A-C	DN50 (2") Dual Port Residential Valve set kit with Single Check Valve

## Technical Data

Pressure Rating (Manifold)	PN16
Medium Temperature	100°C Max
Ambient Temperature	80°C Max
Flow Switch Protection Class	AEL – IP64
Switching Current	AEL - Max 1 A
Switching voltage	Max 250 VAC
Contacts	AEL – SPST

\*Many more options available, just ask a member of the team for details

Optional Keyed alike padlock compatible with all AEL Valves & Valve Sets.

Ordering code: AE-PAD-1



# AE VS-A - ½" & 2" DUAL PORT FIRE SPRINKLER VALVE SET

## Time Delay Instructions:

The AE-VKS JB range of flow switches does not come with an inbuilt time delay to remain as compact as possible, this is to be programmed in the alarm device.

Fire panels will have one of the following time delay features;

- Electrical time delay – this is a fully adjustable time delay and will be programable in the settings. Within the settings you can programme the exact delay you want from 3-30 seconds, we would recommend a delay of around 10 seconds to prevent false activations.
- Mechanical time delay – this will be a physical switch within the panel that is manually activated and will add a fixed time delay of roughly 30 seconds.

If you are unsure of what type of delay your panel has, contact the manufacturer who will be able to advise.

## Flow Switch Installation:

**Installation:** AEL VKS-JB is the easiest flow switch to install on the market, the integrated O-ring means no sealing is required, just hand tighten the 3/4" BSP female thread on the flow switch into one of the 3/4" male dual ports.

A brass cap and washer are supplied fitted to one of the dual ports, ensure that both are fitted and tightened to the port not being used for the flow switch. Use without washer or cap not tightened properly will result in leaks.

To ensure the manifold is securely positioned, bracket within 150mm from top and bottom connections

**Signal Testing:** A signal test can be manually activated to ensure a signal is being sent and received by the alarm device. Place a magnet against the back stem of the flow switch, this is where the read switch is located and will simulate a paddle activation

**Maintenance:** Inspect switches monthly for leaks. If leaks are found, replace the switch. AE-VKS JB water flow switch should

