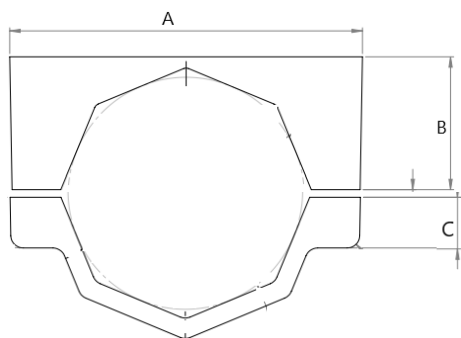
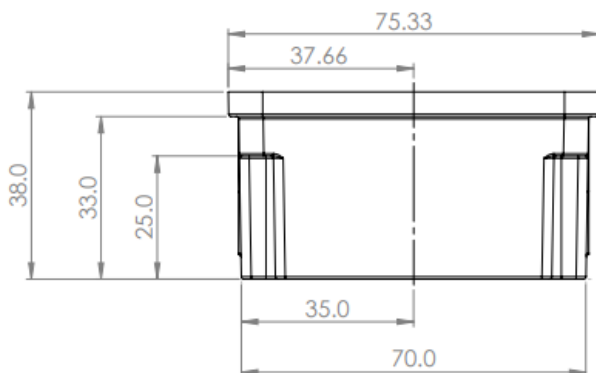
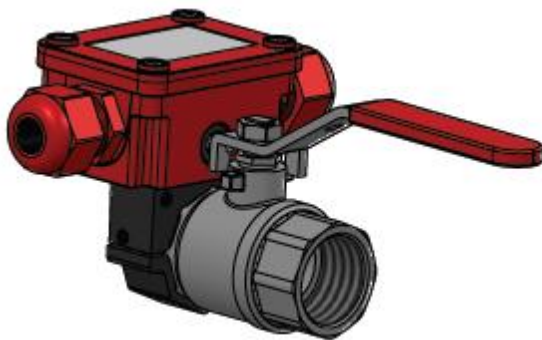
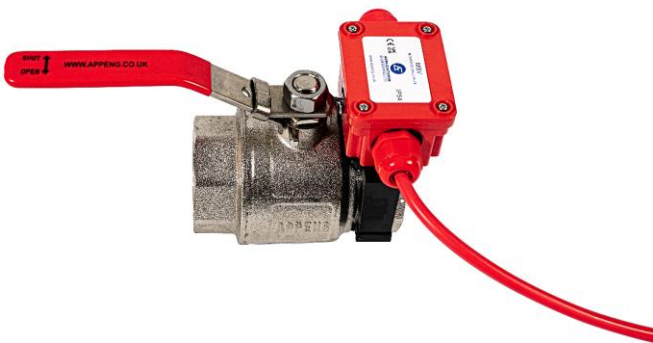


## Monitored Ball Valve



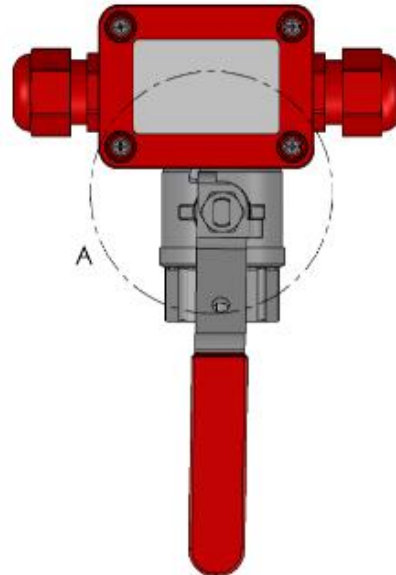
Electrical Protection: IP54

Applications Engineering's Monitored Ball Valve (MBV) is designed to monitor the fully open position of a ball valve. The MBV has a toggle switch, which is activated when the ball valve handle is moved from the fully open position.

The MBV can be fitted onto an Applications Engineering Ball Valve or onto an Applications Engineering Fire Sprinkler Valve Set. For both options it currently comes in size 1", 1 1/4", 1 1/2" and 2".

### MBV Material Specification

Part	Material
Housing	Fire Resistant ABS
Clamp	Fire Resistant ABS



DN	A	B	C
1"	56.0	22.0	8
1 1/4"	68.0	30.5	8
1 1/2"	76.0	36.0	8
2"	90.0	45.0	8

