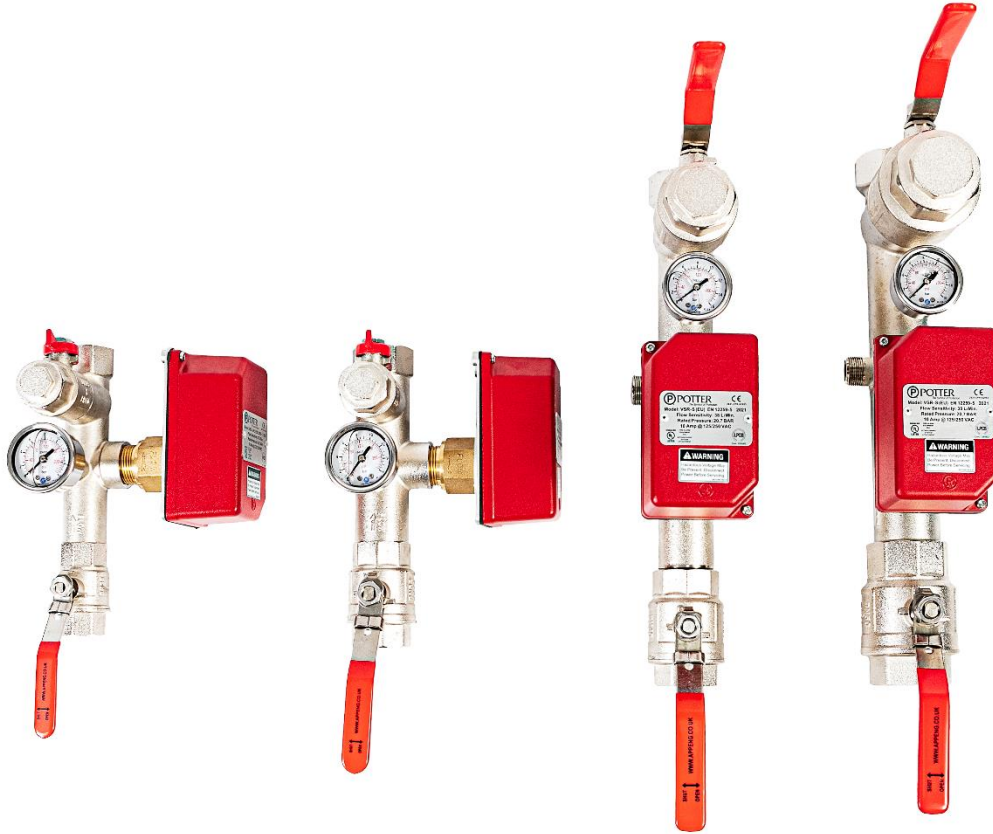




DUAL PORT POTTER FIRE SPRINKLER VALVE SET



Applications Engineering Dual port fire sprinkler valve set has been specifically designed for the residential & Domestic market using a Potter VSR-S series flow switch. A monitored Ball valve can be retro fitted and using our unique design also gives the option to monitor to the flow switch

Features

- Dual ports that enable the flow switch to be mounted on either side.
- Uses Potter VSR-S series flow switch with an inbuilt adjustable time delay
- 100% pressure tested.
- Lockable inlet valve handle
- 1" full bore test valve
- Space saving butterfly handle fitted to drain valve, free of charge butterfly handle tool available on request for easy opening
- Glycerine filled 16 bar pressure gauge
- No loss connector fitted to pressure gauge allows replacement without draining the system
- Easy access for servicing
- Space saving - 244mm end to end
- Less joints minimise risk of leaks

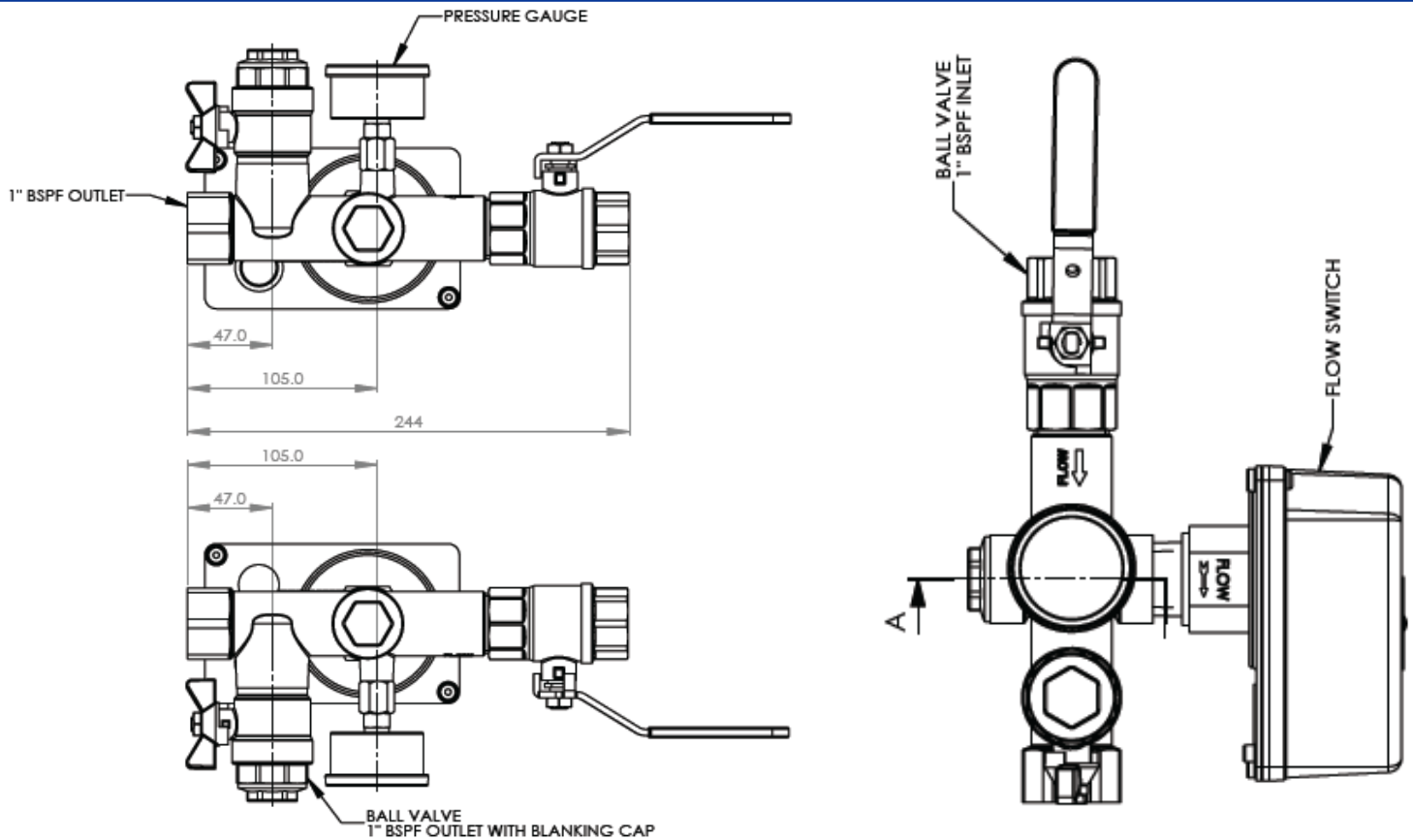


We also supply a full range of WRAS approved check valves, CPVC and MDPE adaptors along with many other extras

T: +44 (0)1825 764737
 F: +44 (0)1825 768330
 E: info@appeng.co.uk
 www.appeng.co.uk



APPLICATIONS
 ENGINEERING LTD



Order Number	Description
AE VS1-A1	DN25 (1") Dual Port Potter Residential Valve set kit
AE VS2-A1	DN32 (1 ¼") Dual Port Potter Residential Valve set kit
AE VS1-A1-BB	DN25 (1") Dual Port Potter Residential Valve set kit with CPVC on inlet and outlet
AE VS2-A1-BB	DN32 (1 ¼") Dual Port Potter Residential Valve set kit with CPVC on inlet and outlet
AE VS1-A1-C	DN25 (1") Dual Port Potter Residential Valve set kit with Single Check Valve
AE VS2-A1-C	DN32 (1 ¼") Dual Port Potter Residential Valve set kit with Single Check Valve

*Many more options available, just ask a member of the team for details

Technical Data	
Pressure Rating	16 Bar
Temperature Range	4.5° C to 49° C
Flow Range	15-38 LPM
Flow Switch Protection Class	IP54
Switching Current	Max 10 A
Switching voltage	Max 250 VAC
Maximum Surge	5.5 m/s

