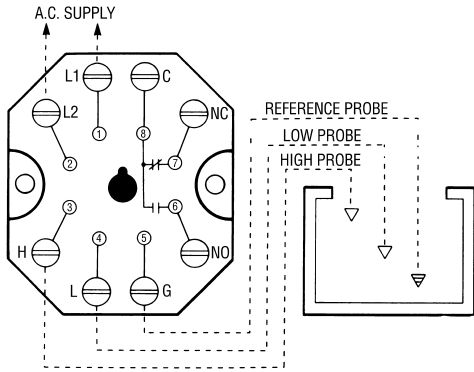




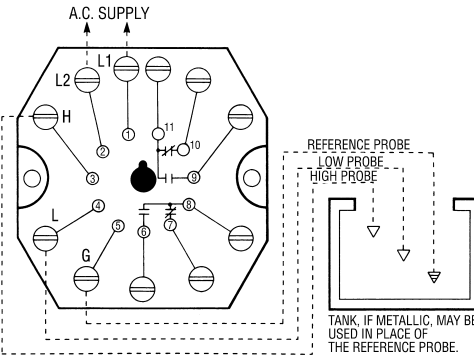
## Wiring

### Series 16M & 16HM

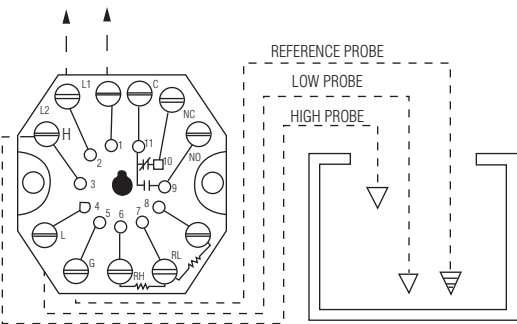


Note: For single level service, use "H" and "G" connections.

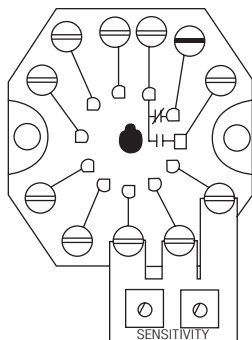
### Series 16DM



### Series 16VM



### Variable Sensitivity Option



Part number 16Z1VG Potentiometer Board available for 16VM only. Consult factory.

## How to Order

Use the **Bold** characters from the chart below to construct a product code.

### 16M Series – Microprocessor Version

- |  |            |          |          |          |          |          |           |           |
|--|------------|----------|----------|----------|----------|----------|-----------|-----------|
|  | <b>16M</b> | <b>X</b> | <b>X</b> | <b>X</b> | <b>X</b> | <b>X</b> | <b>XX</b> | <b>XX</b> |
|--|------------|----------|----------|----------|----------|----------|-----------|-----------|
- Series **16M** General Purpose;
  - Mode of Operation **X**

<b>Direct</b>	<b>Inverse</b>
<b>A</b> – 4.7K	<b>K</b> – 4.7K
<b>B</b> – 10K	<b>F</b> – 470K
<b>C</b> – 26K	<b>L</b> – 10K
<b>D</b> – 50K	<b>G</b> – 1M
	<b>M</b> – 26K
	<b>N</b> – 50K
	<b>P</b> – 100K
	<b>R</b> – 470K
	<b>S</b> – 1M
  - Supply Voltage **X**  
**1** 120 VAC; **2** 240 VAC; **3** 24 VAC; **8** 208/240 VAC
  - Socket Style\* **X**  
**A** 8 Pin Octal      **M** Module Only  
**B** 8 Pin DIN
  - Enclosure **X**  
**0** None; **1** NEMA 1; **4** NEMA 4
  - Time Delay (increasing level) Option **X**  
**00-90** seconds  
**Blank** 0 seconds
  - Time Delay (decreasing level) Option **X**  
**00-90** seconds  
**Blank** 0 seconds
  - Time Out Option **XX**  
See page E-11, Chart A

\*See page E-11 for descriptions.

### 16 HM, 16DM or 16VM Series

- |  |             |          |          |          |          |           |           |
|--|-------------|----------|----------|----------|----------|-----------|-----------|
|  | <b>16HM</b> | <b>X</b> | <b>X</b> | <b>X</b> | <b>X</b> | <b>XX</b> | <b>XX</b> |
|--|-------------|----------|----------|----------|----------|-----------|-----------|
- Series **16HM** High Sensitivity;  
**16DM** DPDT Load Contact;  
**16VM** Field Selectable Sensitivity<sup>1</sup>
  - Mode of Operation<sup>2</sup> **X**

<b>Direct</b>	<b>Inverse</b>
<b>A</b> – 4.7K <sup>4</sup>	<b>K</b> – 4.7K <sup>4</sup>
<b>B</b> – 10K <sup>4</sup>	<b>F</b> – 470K <sup>4</sup>
<b>C</b> – 26K <sup>4</sup>	<b>L</b> – 10K <sup>4</sup>
<b>D</b> – 50K <sup>4</sup>	<b>G</b> – 1M <sup>4</sup>
<b>E</b> – 100K <sup>4</sup>	<b>M</b> – 26K <sup>4</sup>
	<b>N</b> – 50K <sup>4</sup>
	<b>P</b> – 100K <sup>4</sup>
	<b>R</b> – 470K <sup>4</sup>
	<b>S</b> – 1M <sup>4</sup>
	<b>T</b> – 3M <sup>3</sup>
	<b>W</b> – 5.5M <sup>3</sup>
	<b>Z</b> – 0-700K <sup>5,7</sup>
  - Supply Voltage **X**  
**1** 120 VAC; **2** 240 VAC; **3** 24 VAC; **8** 208/240 VAC
  - Socket Style **X**  
**A** 8 Pin Octal (16M & 16HM), 11 Pin Octal (16DM & 16VM);  
**B** DIN Mount; **M** None, Module Only<sup>6</sup>
  - Enclosure **X**  
**0** None; **1** NEMA 1; **4** NEMA 4
  - Time Delay (increasing level) Option **X**  
**01-20** seconds; **0V** variable (16VM only)
  - Time Delay (decreasing level) Option **X**  
**01-20** seconds; **0V** variable (16VM only)

Notes:

- 16VM select modes **A, K, Y** or **Z** only.
- 16HM & 16DM only. Series 16VM includes full set of the resistors listed above. Specify a sensitivity to determine mode of operation.
- 16VM only.
- All Series except 16HM.
- 16VM only.
- Socket style M requires enclosure **0** – None.
- Mounting style A (11 pin octal only)

Socket Details and Option Availability are located on web site.