

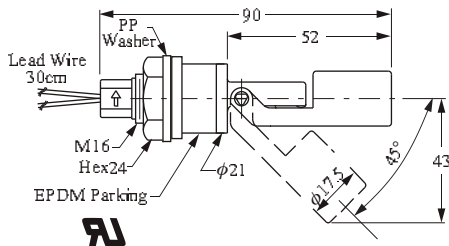
PLASTIC OH TYPES

► FC H21PD / H31PD



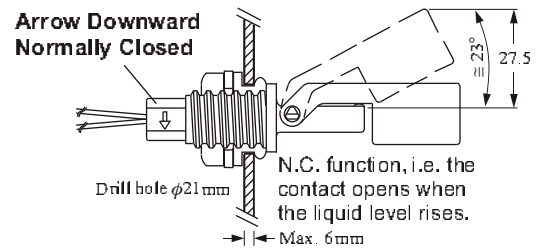
- For models FCH2 and FCH3, three different types of material are available PP, Nylon, and PVDF.
- The special lead wire or cable can be supplied according to the requirement of the customer.
- The customer can select the type of reed switch which they require.
- For specifications of the standard design see catalog (page 10).
- OEM customers are welcome.

■ Optional FC H21PDO(Round)

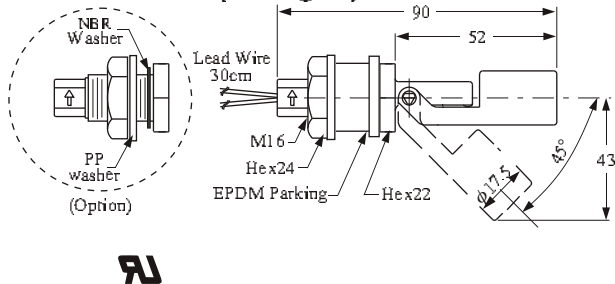


■ Installation / N.C. / N.O. Action Position

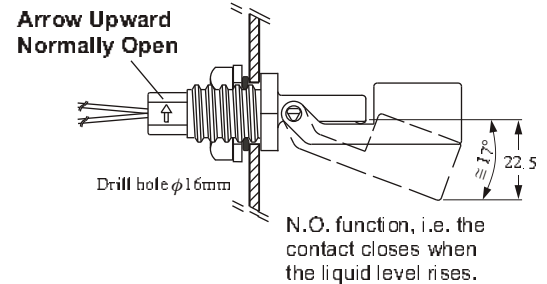
[External mounting]



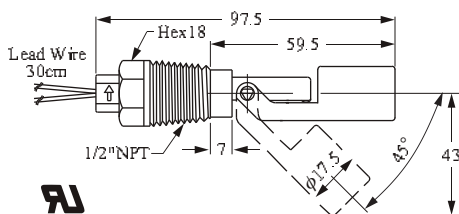
■ Standard FC H21PDD (Hexagon)



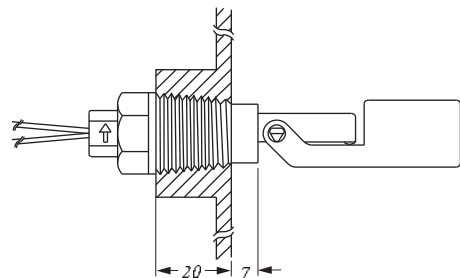
[Internal mounting]



■ FC H31PD

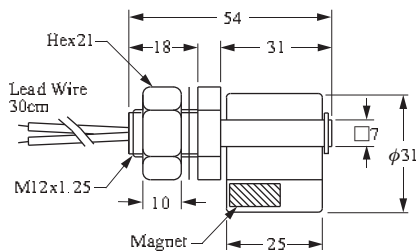
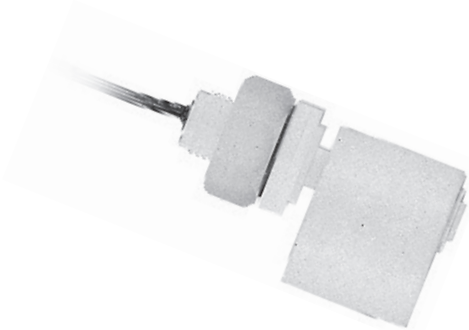


[External mounting]



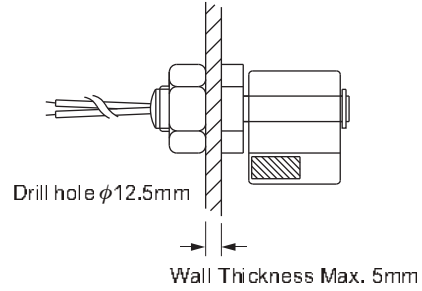
PLASTIC OH TYPES

► FCH11QD



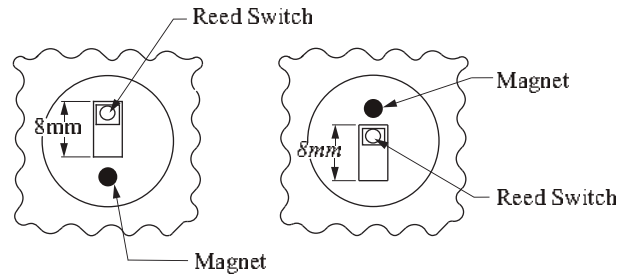
Washer: NBR

■ Installation / N.C./ N.O. Action Position



Normally open
N.O.

Normally closed
N.C.



- All the products in this range come with the UL E161 587 approval.
- All the products in this range are designed to be mounted on the side.
- For the specific gravity of water is used as a reference point in calculating specific gravity.

■ SPECIFICATIONS

Description \ Type	FCH11QD	FCH21PD FCH31PD	FCH23FD FCH33FD	FCH24YD FCH34YD	FCH25GD FCH35GD
Switching Capacity Max.	50W SPST				
Switching Voltage Max.	240VAC / 200Vdc				
Switching Current Max. (A)	0.5A				
Carry Current Max. (A)	1A				
Lead Wire	PVC AWG22	XLPE AWG22			
Max. Pressure (Kg/cm ²)	ATM	4 kg/cm ²	2 kg/cm ²		
Operating Temperature	-20~80°C		-20~120°C		
Material	PP		PVDF	Nylon	Polysuphone
Suitable Specific Gravity	0.78	0.75	0.85	0.8	0.85
Weight	25 g	H21: 22 g H31: 21 g	25 g	23 g	25.4 g