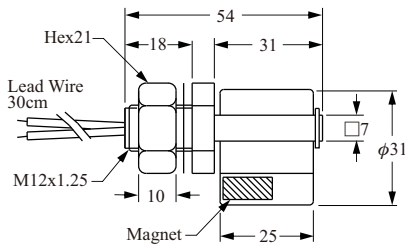
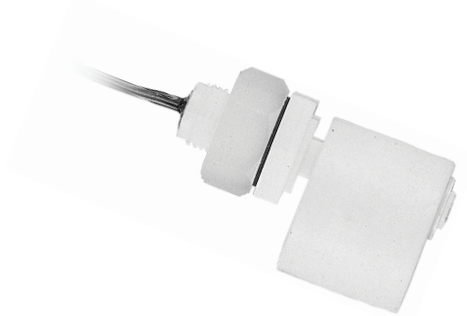


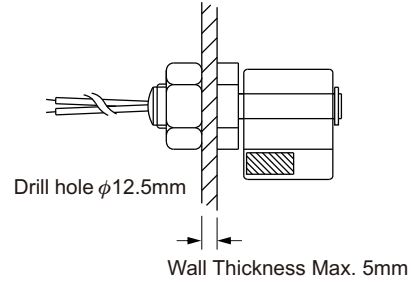
PLASTIC OH TYPES

► FCH11QD



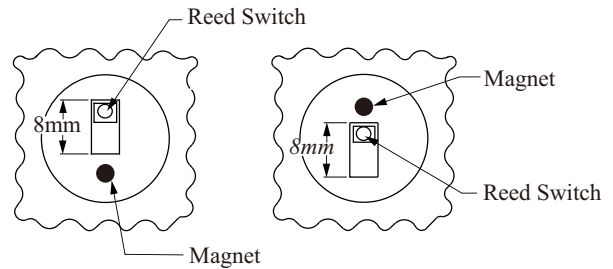
Washer: NBR

■ Installation / N.C./ N.O. Action Position



Normally open
N.O.

Normally closed
N.C.



- All the products in this range come with the UL E161587 approval.
- All the products in this range are designed to be mounted on the side.
- For the specific gravity of water is used as a reference point in calculating specific gravity.

■ SPECIFICATIONS

Description \ Type	FCH11QD	FCH21PD FCH31PD	FCH23FD FCH33FD	FCH24YD FCH34YD	FCH25GD FCH35GD
Switching Capacity Max.	50W SPST				
Switching Voltage Max.	240VAC / 200Vdc				
Switching Current Max. (A)	0.5A				
Carry Current Max. (A)	1A				
Lead Wire	PVC AWG22	XLPE AWG22			
Max. Pressure (Kg/cm ²)	ATM	4 kg/cm ²	2 kg/cm ²		
Operating Temperature	-20~80°C		-20~120°C		
Material	PP		PVDF	Nylon	Polysuphone
Suitable Specific Gravity	0.78	0.75	0.85	0.8	0.85
Weight	25 g	H21: 22 g H31: 21 g	25 g	23 g	25.4 g