

FS-6 0.4 - 6.0 (l/min)

Pre-adjusted set points

The FS-6 range of flow switches provides economical flow protection for a wide range of industrial applications such as photocopiers, heavy-duty floor cleaners and industrial dishwashers. The European integral G 1/4" connections obviate the need for additional adaptors and the design allows for easy mounting.

Specifications

(all data related to water at +20°C)

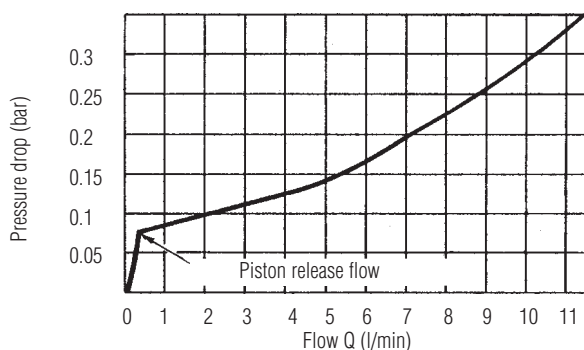
Max. flow	12 l/min
Max. operating pressure	30 bar at +20 °C 16 bar at +50 °C 13 bar at +70 °C 5 bar at +85 °C
Proof pressure	45 bar
Max. temperature	+85 °C
Set points	see order number
Switching function (related to increasing flow)	NC, NO, SPDT
Factory calibration position	vertical, inlet port down
Mounting orientation	Any position
Repeatability	±1%
Adjustment accuracy	±15%
Hysteresis	max. 20%
Mounting	G1/4"
Electrical connections	cable: PVC, 0.34 mm ² (length: approx. 1 m)
Enclosure	IP 65
Electrical data contact rating	NC/NO: 100 VA, 3 A, 220 V- SPDT: 20 VA, 0.5 A, 250 VA
Weight:	0.16 kg

Please note: For mineral oil applications please order brass piston instead of polysulphone piston.
Add GE169 to order number e.g. 020-0290 - GE169

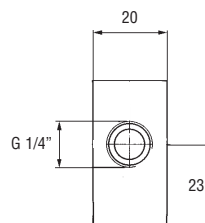
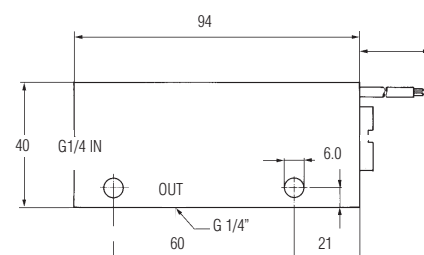
How to Order

set points (l/min)	order number		
	NO	NC	SPDT
0.4	020-0290	020-0297	020-0304
1.0	020-0291	020-0298	020-0305
2.0	020-0292	020-0299	020-0306
3.0	020-0293	020-0300	020-0307
4.0	020-0294	020-0301	020-0308
6.0	020-0295	020-0302	020-0309

Pressure drop diagram (at min. set point adjustment)



Dimensions (in mm)



Housing: Delrin®
Piston: Polysulfone*
Spring: Stainless Steel
O-Ring: Viton®

* Option Brass

Wiring Diagram

