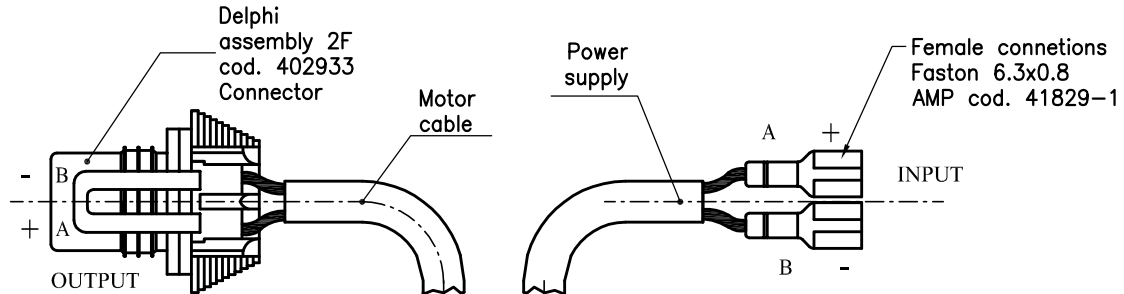
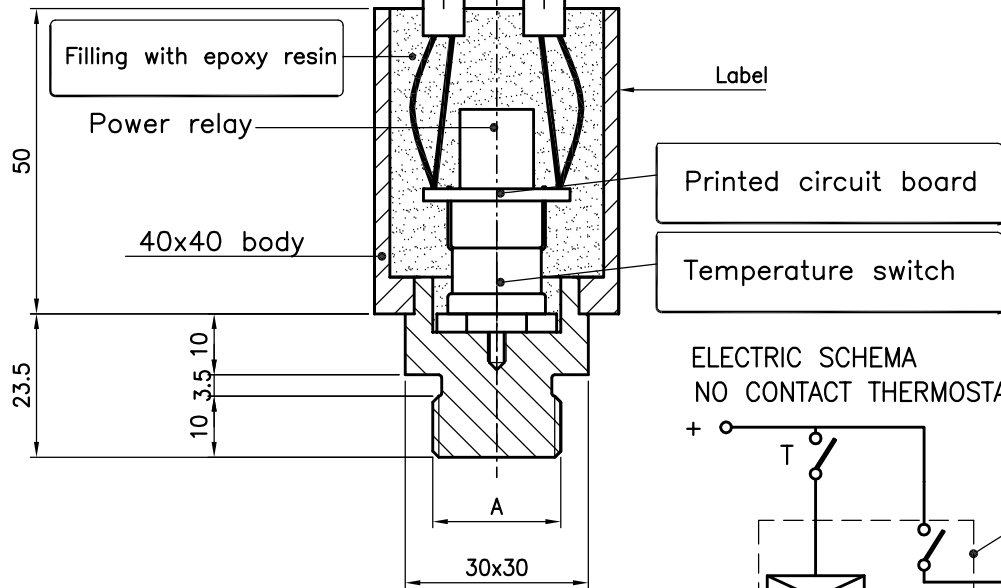


# TEMPERATURE SWITCH WITH INTEGRATED POWER RELAY TYPE TCR .....



**TECHNICAL DATA**

Power supply	12/24 Vdc
Maximum carrying current	35A / 10 minutes
	30A / 1hour
Maximum inrush current	60 A
Initial contact resistance	100mOhm max.
Mechanical life	10 <sup>7</sup>
Electrical life	2x10 <sup>5</sup>
Working temperature	47°C (standard)
	other temperature on request



**Materials**

Thread connection	Brass
40x40 body	Black PA 66

