

# Series 5482 - Wet/Wet Differential Pressure Transducer

- ▶ 1% Error Band over -20 to +80°C
- ▶ Ranges from 30mbar to 20bar
- ▶ 24V a.c./d.c input option
- ▶ Line pressure 34bar

This series of miniature differential pressure transducers have a piezo-resistive sensor and a unique conductive seal that eliminates internal wire bonding thus enhancing reliability. Zero and full-scale adjustments are provided under the top cover. They are ideal for use in areas requiring exact pressure measurement, low hysteresis and long-term stability. For all applications where air, oil or water is to be monitored. The unit is supplied with mounting bracket and integral 1 metre cable

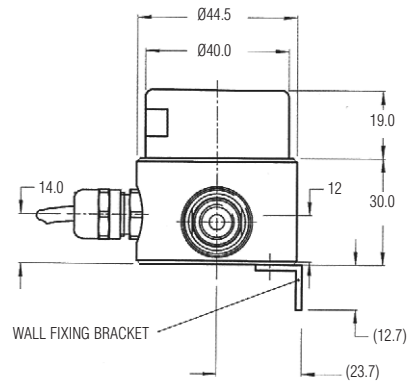
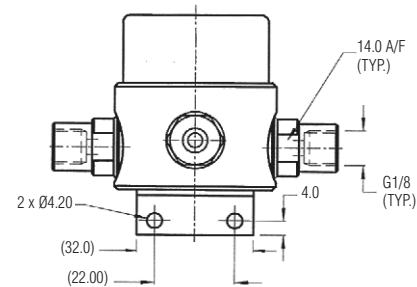
## Specifications

<b>Input</b>	
<b>Pressure Range</b>	30mbar to 20bar with intermediate ranges to suit application
<b>Proof Pressure</b>	1.5 x FS
<b>Line Pressure</b>	34bar G max
<b>Performance</b>	
<b>Long Term Drift</b>	0.2% per year typical
<b>Accuracy</b>	±0.25%FS
<b>Thermal Error</b>	±1%
<b>Compensated Temperature Range</b>	-20° to +80°C
<b>Operating Temperatures</b>	
<b>Zero Tolerance</b>	±0.2%
<b>Span Tolerance</b>	±0.2%
<b>Mechanical Configuration</b>	
<b>Pressure Port</b>	G1/8"AT Internal
<b>Wetted Parts</b>	Compatible with air, water and oil
<b>Electrical Connection</b>	1metre cable
<b>Approvals</b>	CE
<b>Weight</b>	250grams

These transducers must be adequately earthed to meet EN 61000-6-2.



## Dimensions (in mm)

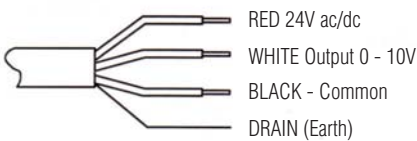


## Electrical Connections

### Type 5482A: mA Output



### Type 5482B: Voltage Output



## How To Order

5482 B Range 400mbar  
**Output**  
 S - 0 - 10V  
 B - 4-20mA